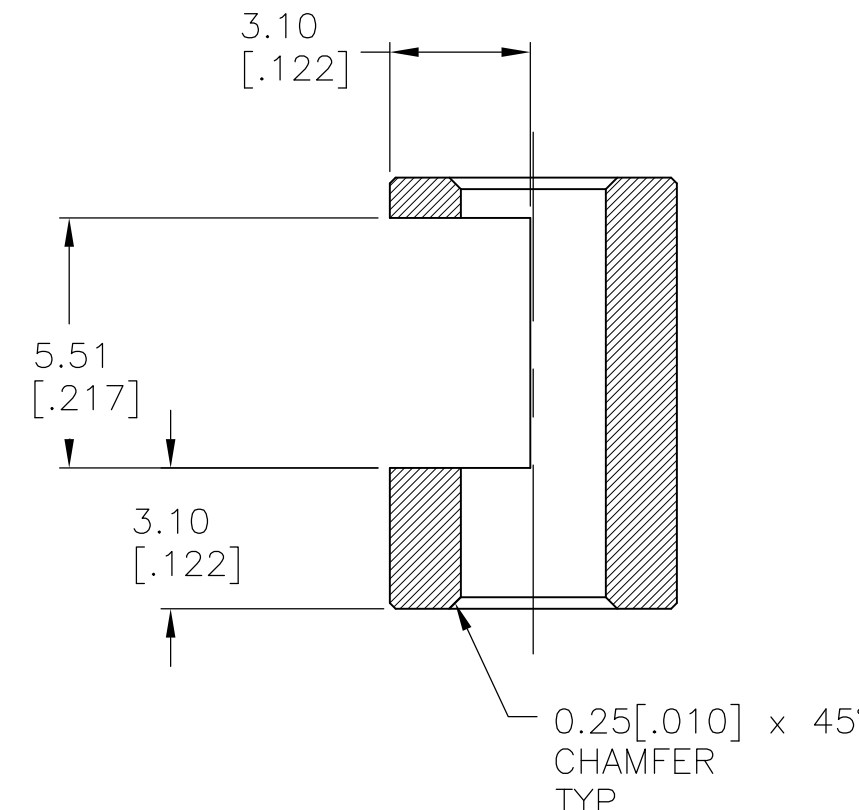
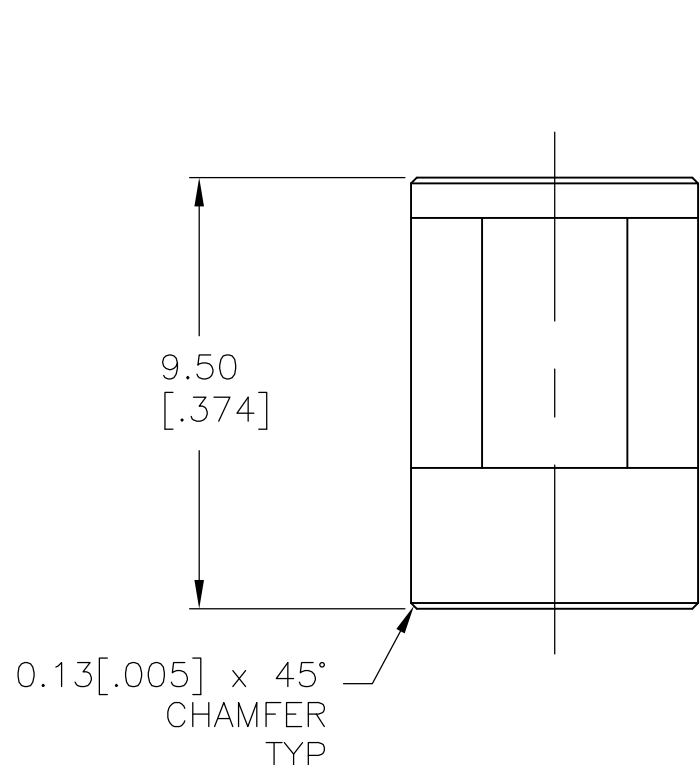
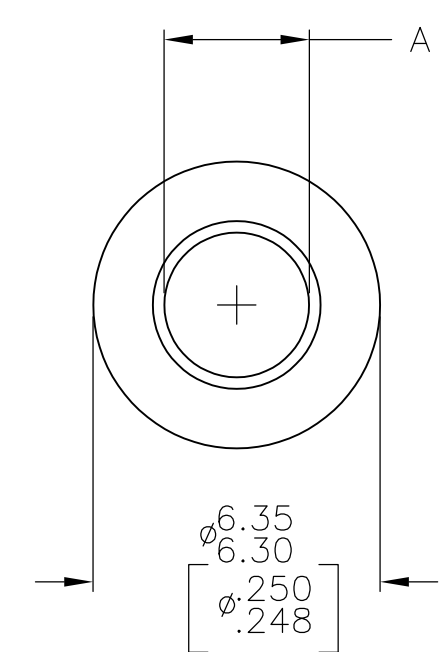


THIS DRAWING IS UNPUBLISHED. RELEASED FOR PUBLICATION  
 © COPYRIGHT BY TYCO ELECTRONICS CORPORATION. ALL RIGHTS RESERVED.

LOC	DIST	REVISIONS			
P	LTR	DESCRIPTION	DATE	DWN	APVD
AD	00	A	ECO-07-024549	18OCT07	MB MW



- 1 BRASS
- 2 NICKEL PLATE ELECTRODEPOSITED



4.09 <sup>+0.08</sup> <sub>-0.0</sub> [.161 <sup>+0.003</sup> <sub>-.000</sub> ]	2	1	KR-304	1825620-3
4.83 <sup>+0.08</sup> <sub>-0.0</sub> [.190 <sup>+0.003</sup> <sub>-.000</sub> ]	2	1	KR-204	1825620-2
3.20 <sup>+0.08</sup> <sub>-0.0</sub> [.126 <sup>+0.003</sup> <sub>-.000</sub> ]	2	1	KR-104	1825620-1
A	FINISH	MATERIAL	ALCO P/N	TE P/N

THIS DRAWING IS A CONTROLLED DOCUMENT.		DWN M.BINNER 18OCT2007	Tyco Electronics Corporation Harrisburg, PA 17105-3608		
DIMENSIONS: mm [INCHES]		CHK M.WILBOURN 18OCT07	NAME SHAFT ADAPTER		
TOLERANCES UNLESS OTHERWISE SPECIFIED: 0 PLC ± - 1 PLC ± - 2 PLC ± 0.13 [.005] 3 PLC ± - 4 PLC ± - ANGLES ± 5°		APVD M.WILBOURN 18OCT07	PRODUCT SPEC -		
MATERIAL SEE TABLE		FINISH SEE TABLE	APPLICATION SPEC -	SIZE A3	CAGE CODE 00779
CUSTOMER DRAWING			DRAWING NO G-1825620	RESTRICTED TO -	SCALE 8:1
			SHEET 1 OF 1	REV A	